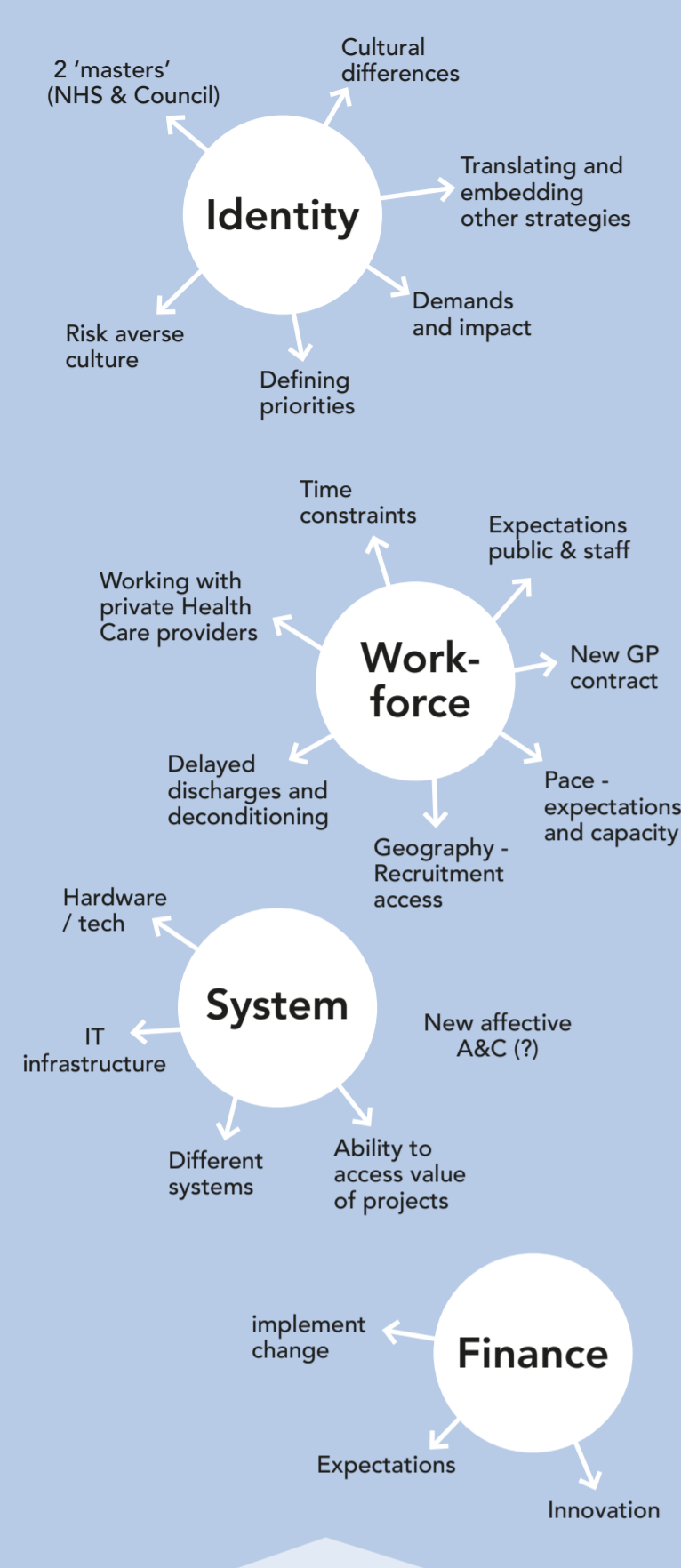
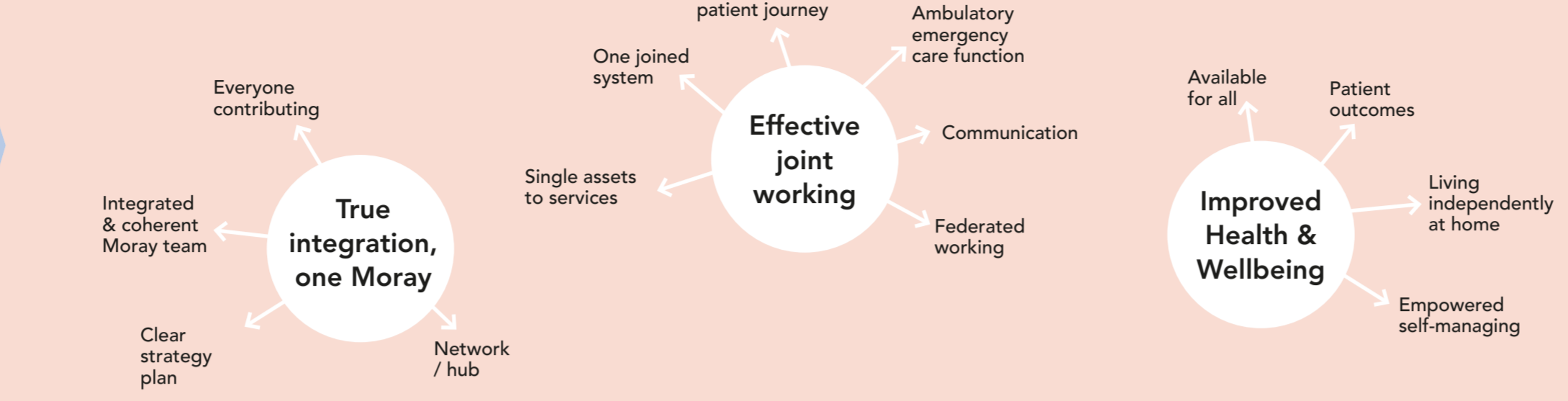


Challenges



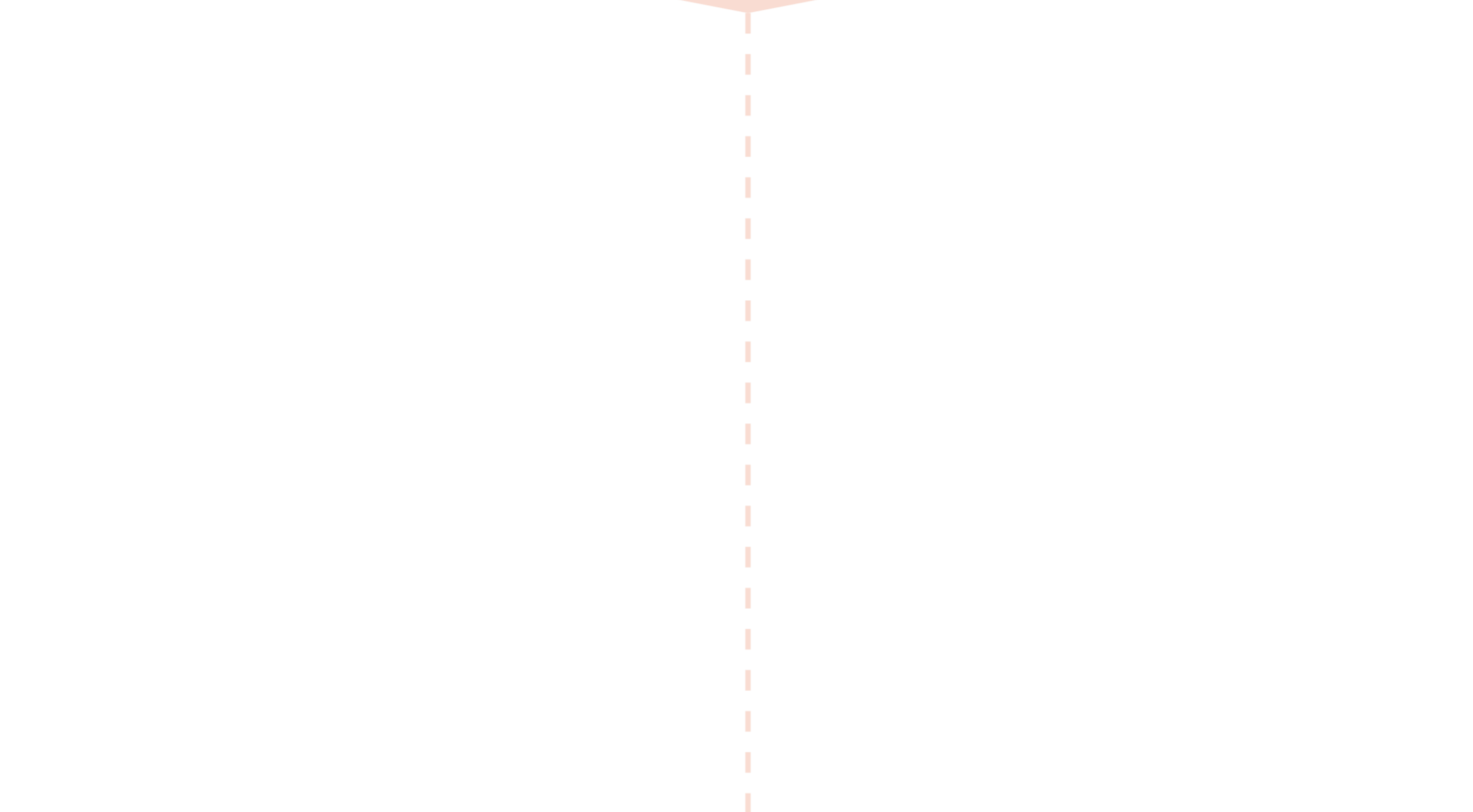
Vision & objectives



Outcomes



Priorities

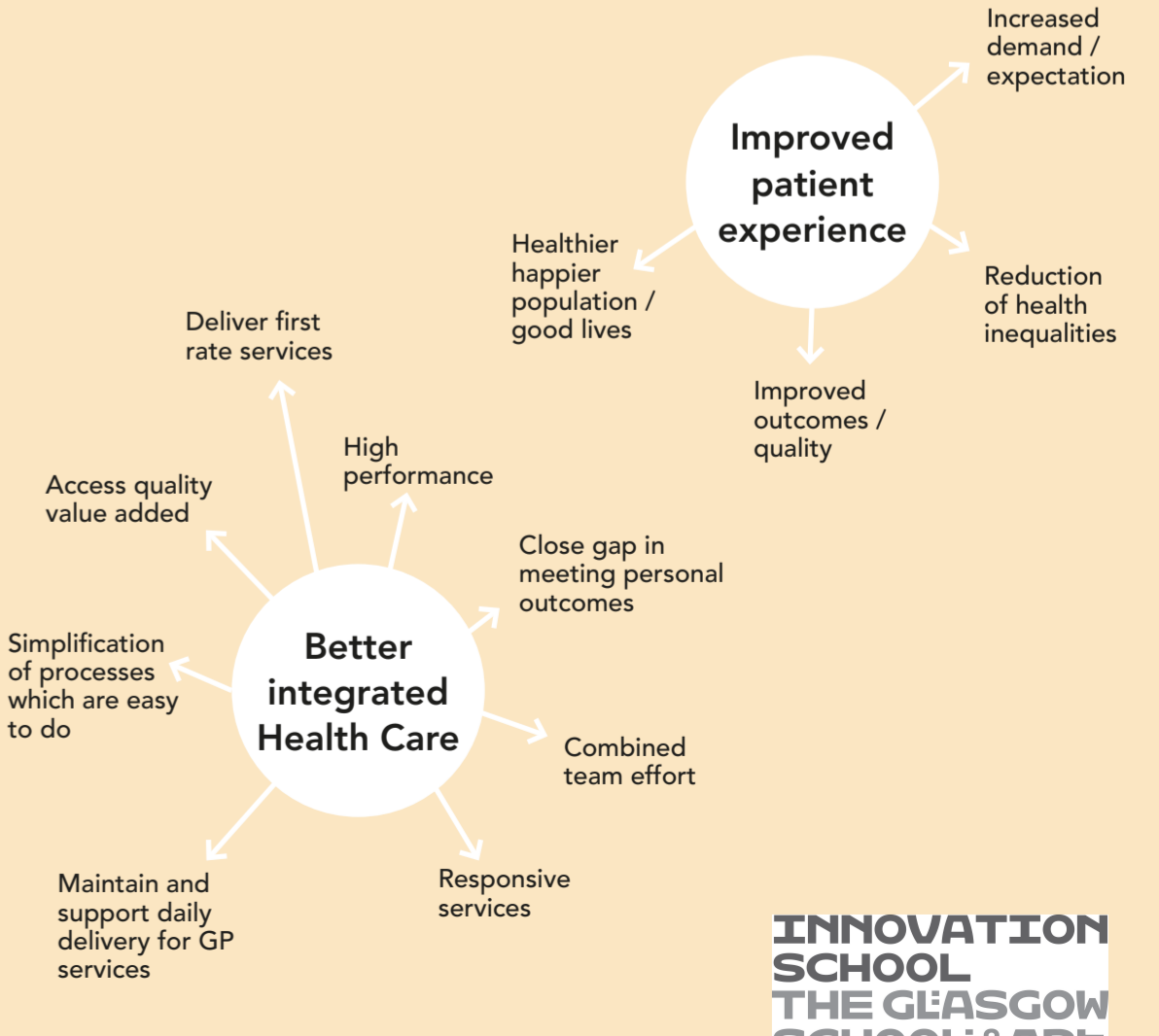


Actions

Assets

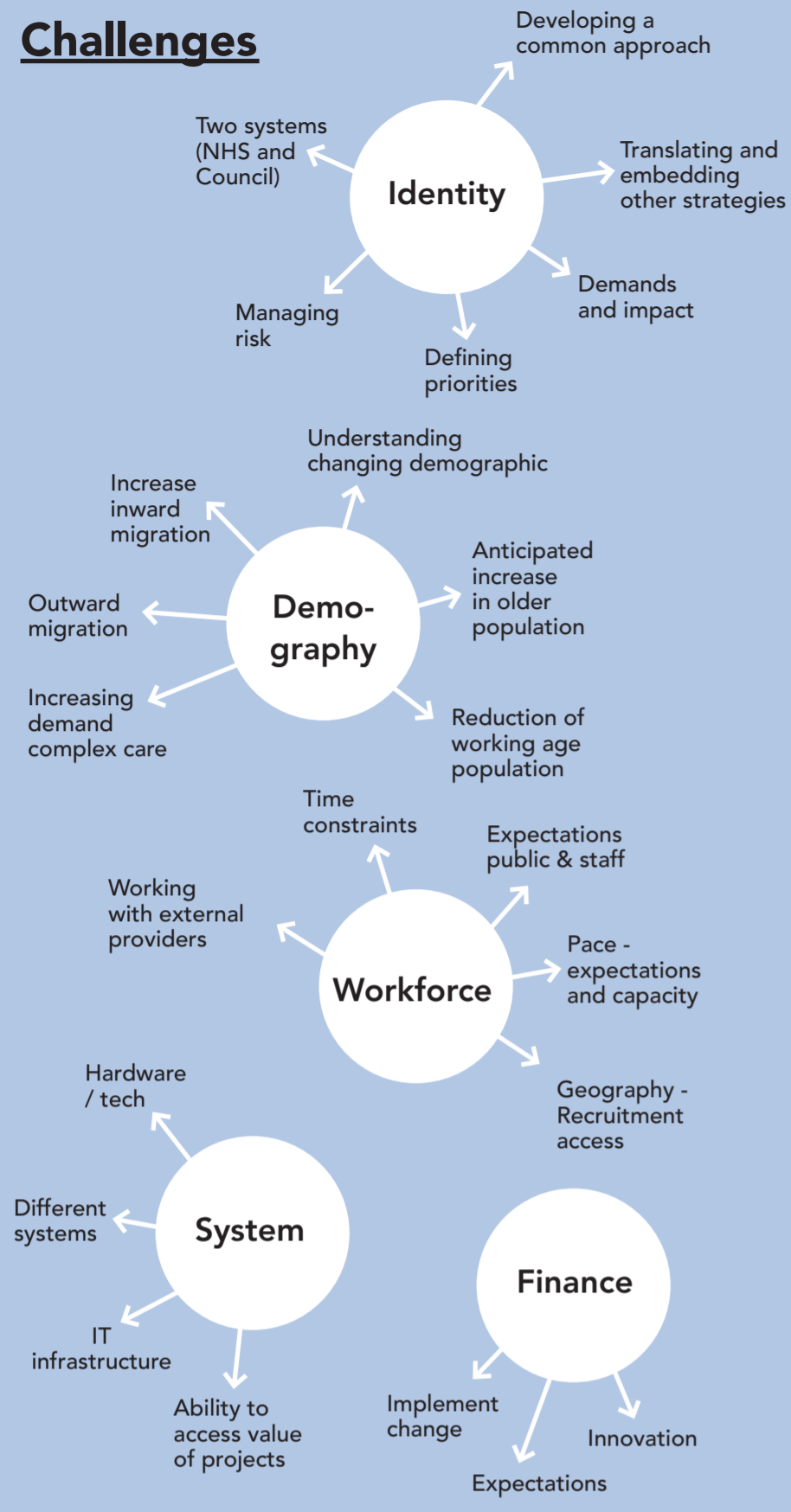


Impact



Informed by...

Challenges



Informed by...

Vision

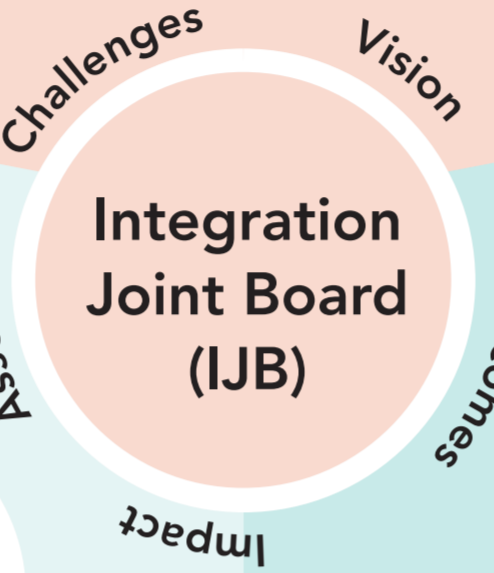
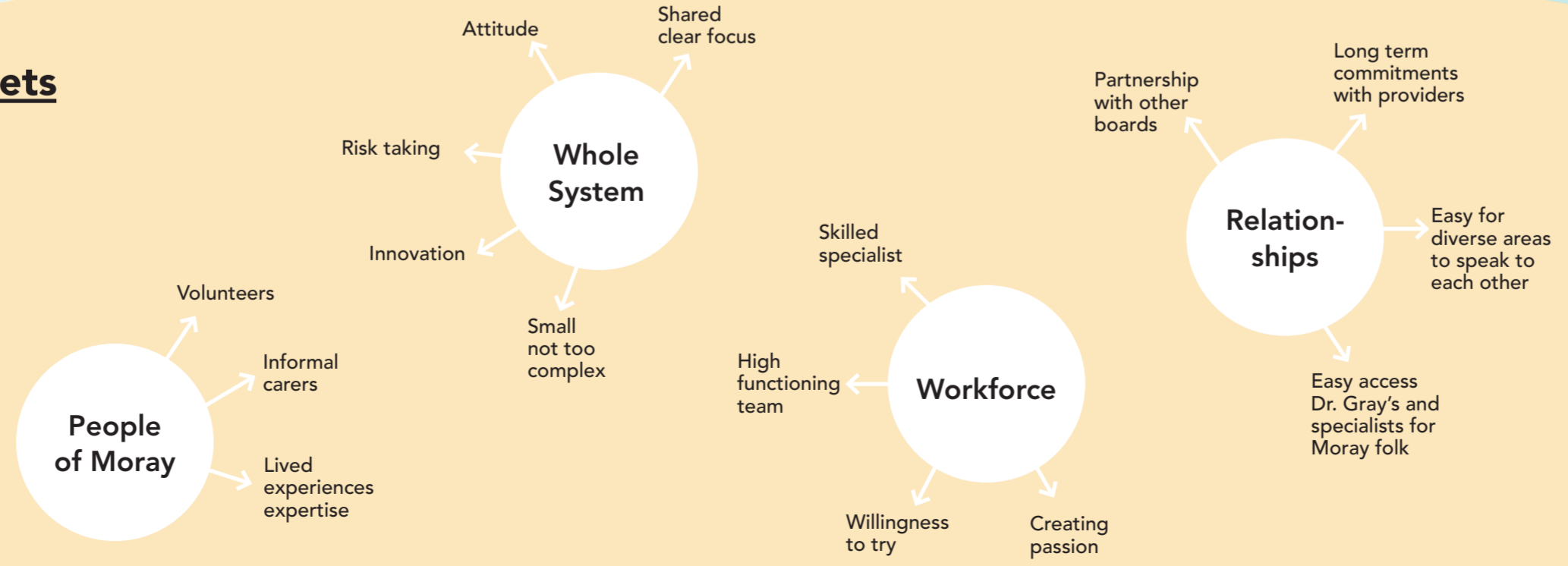
Creating partnerships in care with the people of Moray

"Working together with the people of Moray we achieve the best possible Health and Wellbeing for all"

Priorities



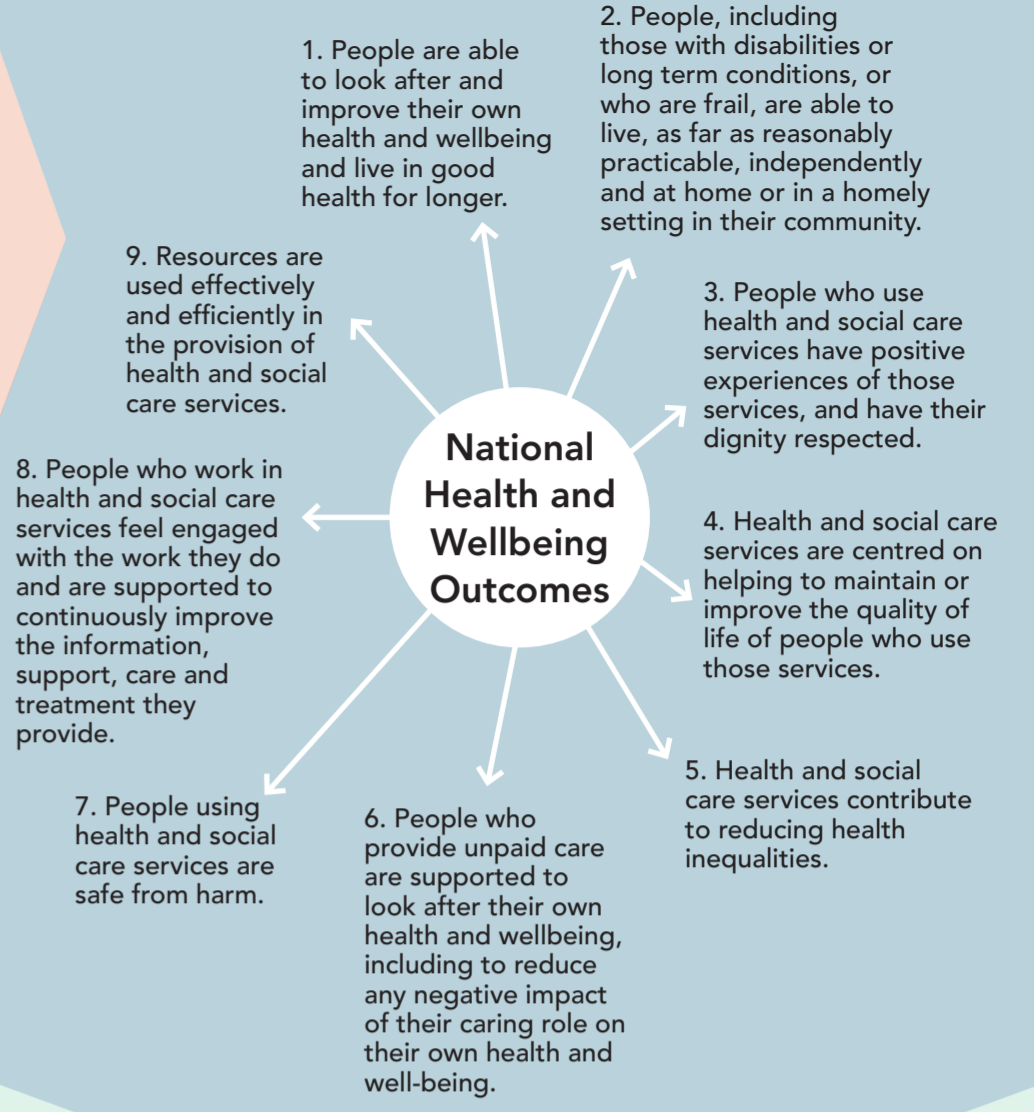
Assets



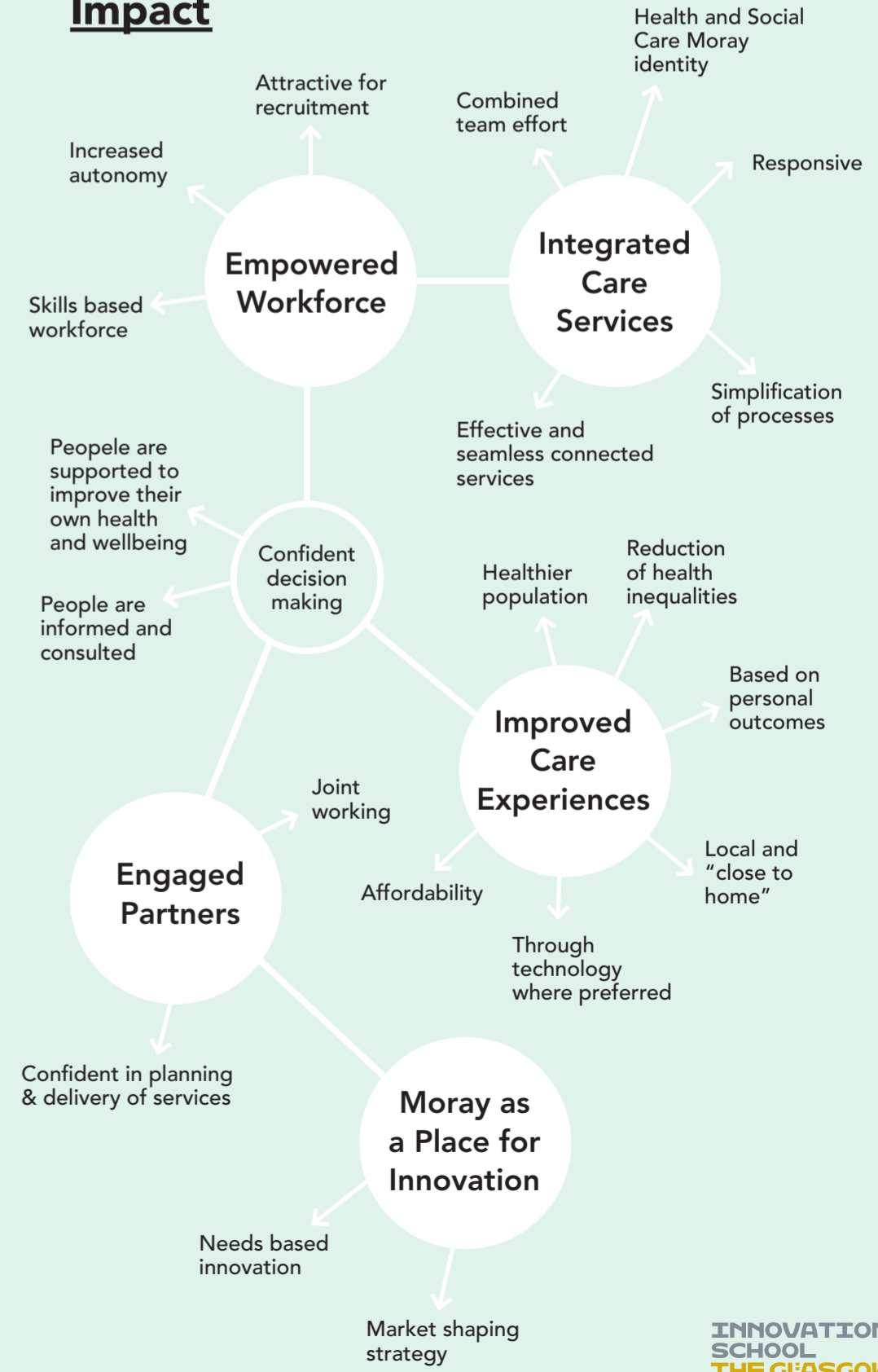
Actions

- Developing the workforce and the relationships with the public and partners to:
 - Build trust and confidence
 - Develop an understanding that conversations about Health and Care will be different
- Development of Integrated Teams
- Exploring new models of integrated care at a local level:
 - Infrastructure requirements
 - Technology
- Roll out of House of Care and Self Directed Support
- Retender process : Care Contracts
- Reframe the role of Social Worker
- Supporting access and building resilience
- Predictive modelling: Children to Adult Services

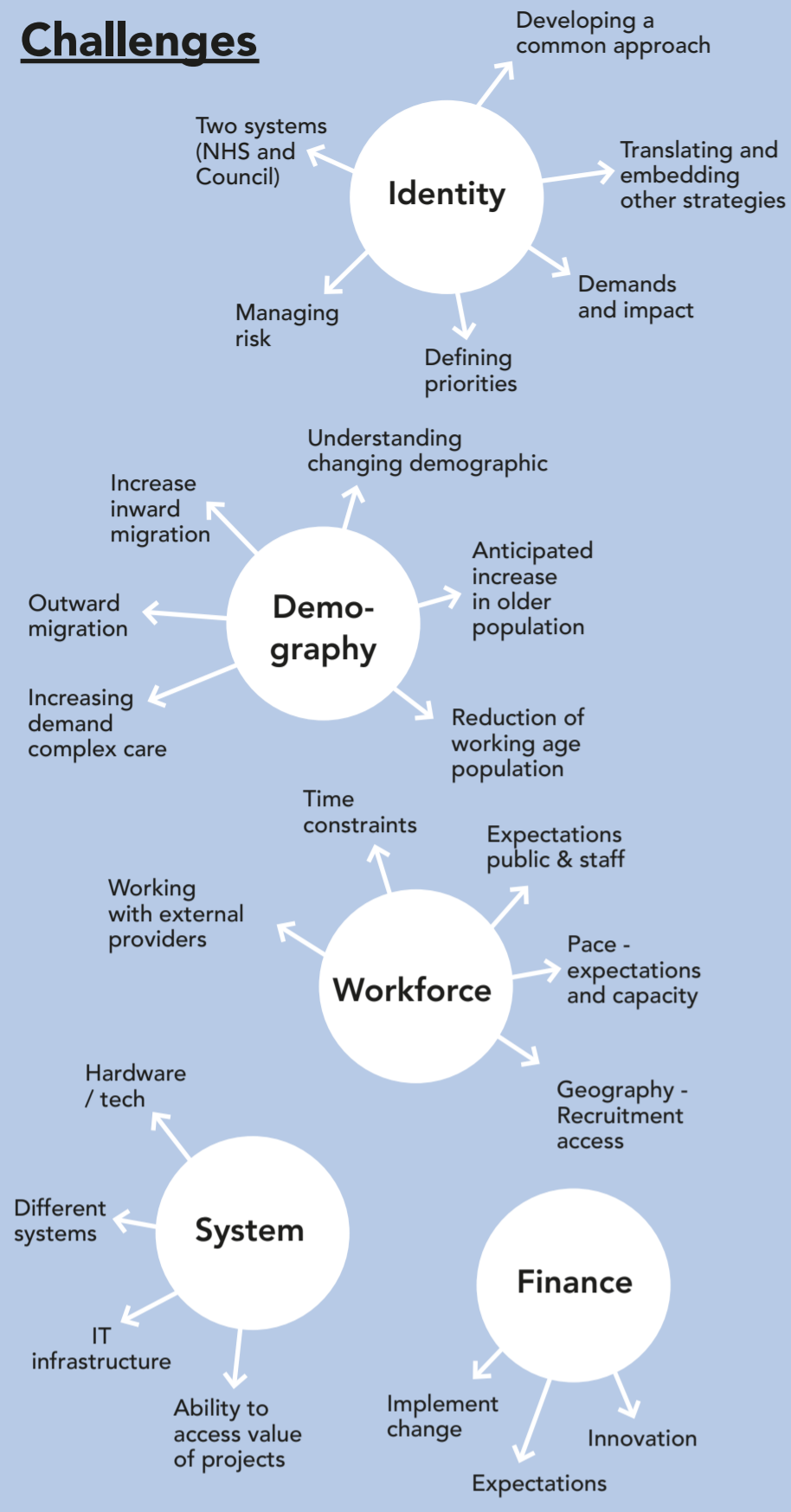
Outcomes



Impact



Challenges



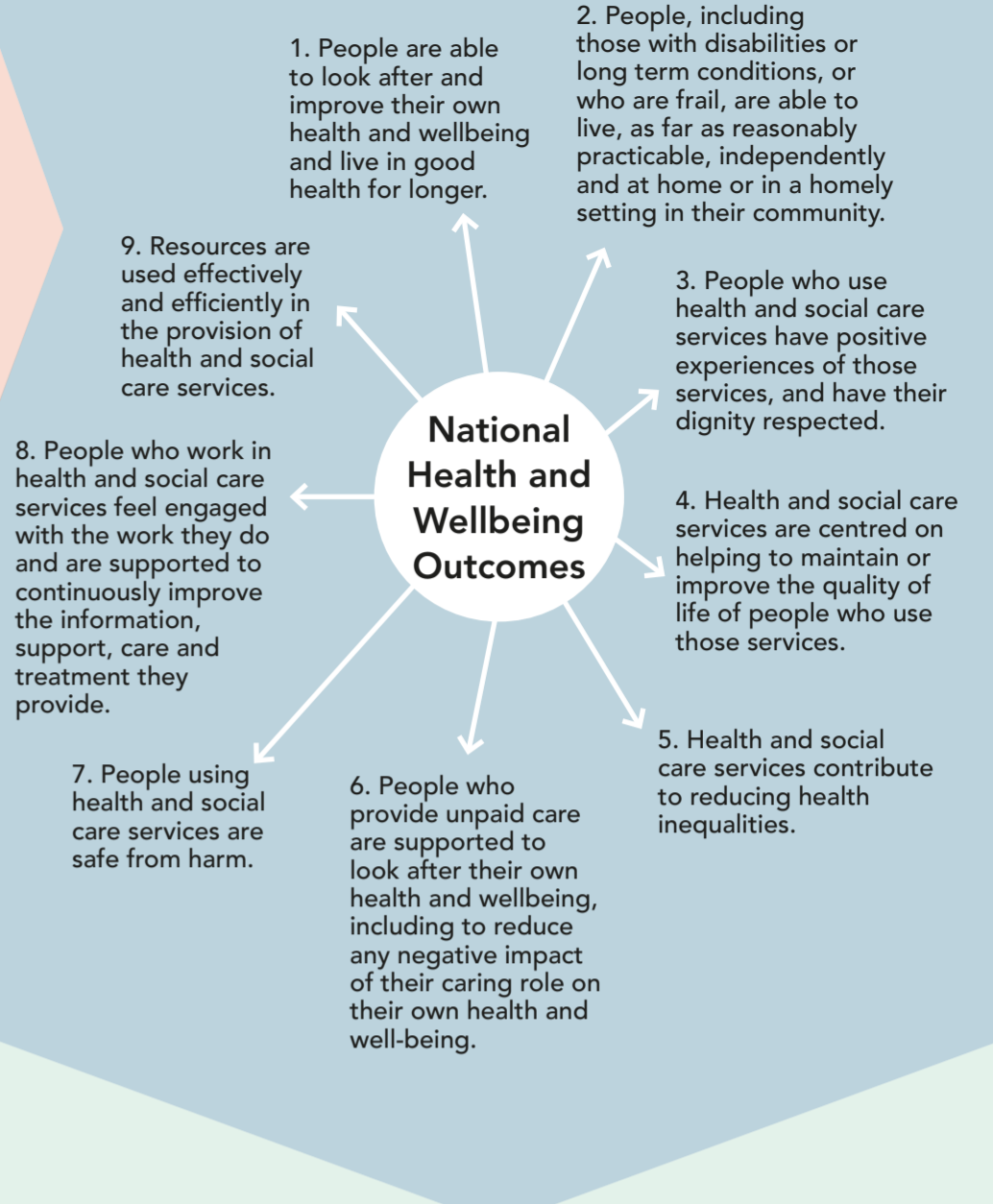
Vision

Creating partnerships in care with the people of Moray

"Working together with the people of Moray we achieve the best possible Health and Wellbeing for all"

Outcomes

Version 3: July 2019

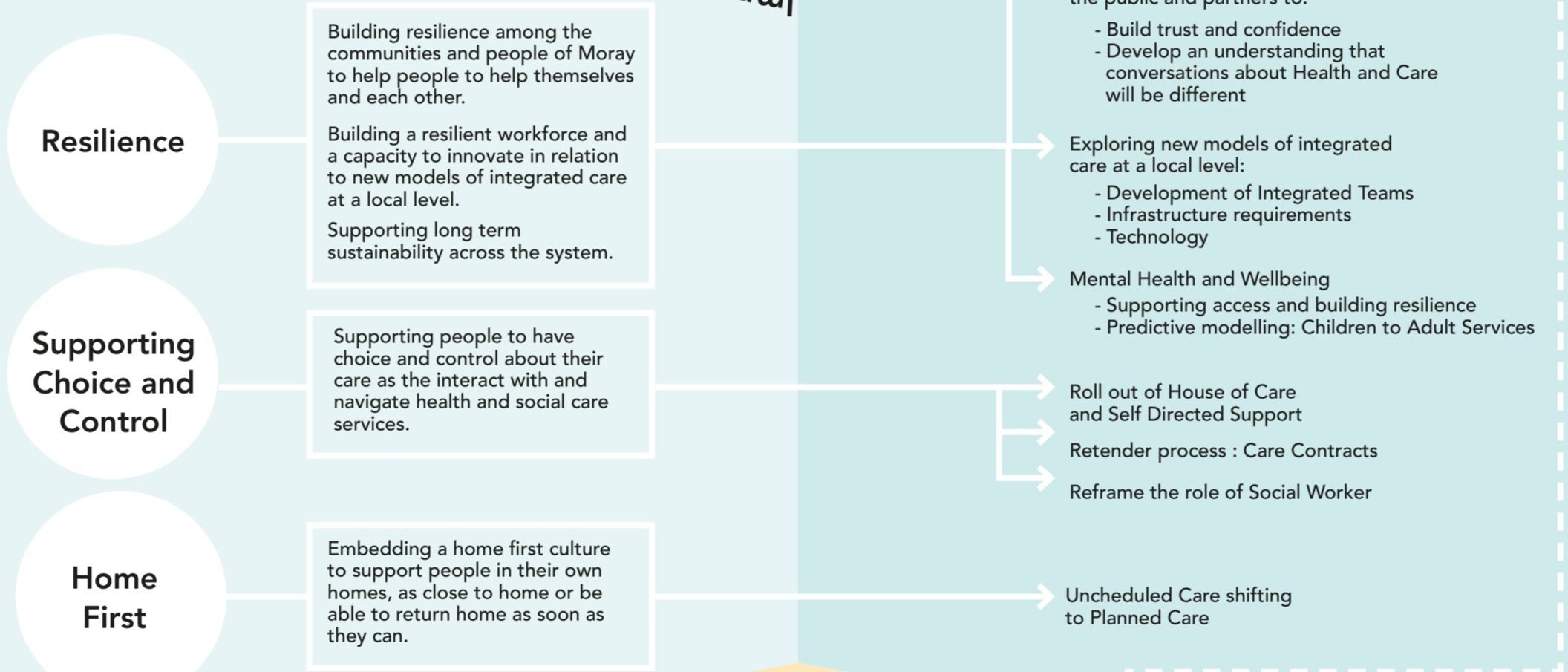
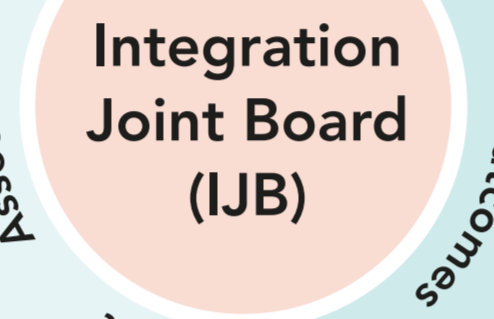


Themes

The themes are underpinned by a "Partners in Care" approach to support a shift in culture of health and social care. This involves three conversations which will help to structure of the strategy and resulting priorities:

1. How can we help you to help yourself?
2. How can we help you when you need it (crisis/re-ablement)?
3. How can we provide ongoing support?

Challenges

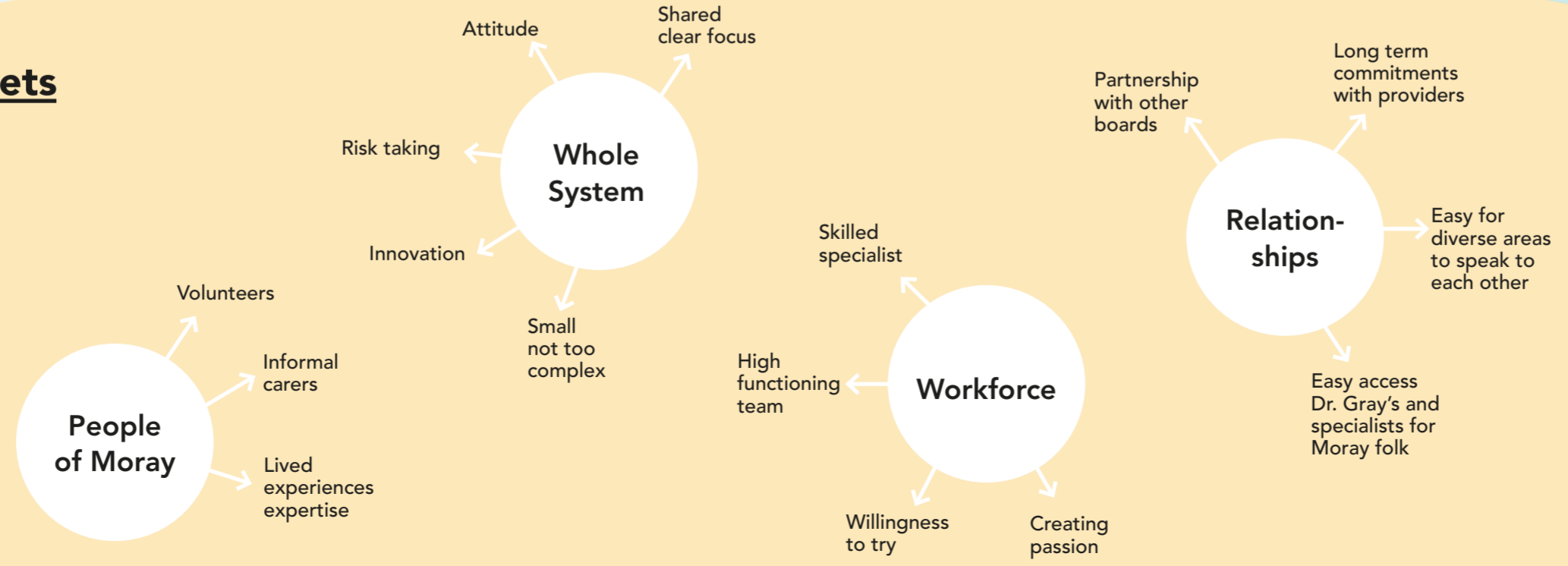


Priorities



Informed by...

Assets



Impact

